

diversified services. unvarying quality

**Eurogroove**<sup>TM</sup>  
Façade Unlimited

A Complete Façade & uPVC Solution Company

INDIA & MIDDLE EAST

[www.eurogroove.in](http://www.eurogroove.in)

# INTRODUCTION

FAÇADE	DOORS	WINDOWS	SKYLIGHTS	SPIDER GLAZING
CLADDINGS	SUN BREAKERS	SHOWER CUBICLE	RAILINGS	CANOPIES



Welcome to **GT Eurogroove Pvt. Ltd.** world of thoughtful innovations. An international company specialized in design, fabricate and install facades, high end windows and door systems, curtain walling, structural glazing, composite panel cladding and complete architectural products including stainless steel fabrication.

**GT Eurogroove** a unique combination of technological expertise in windows and doors over the last three decades. The manufacturing facilities boast of the latest imported CNC machinery with a capacity of 250 uPVC windows/Shift and 1000m<sup>2</sup> of unitized glazed panel, aluminium doors and windows.

**GT Eurogroove** provides state-of-the-art products for the unceasingly emergent construction industry. The main aim is to innovate and produce quality standard products that enhance the new-era building architecture. A company committed for offering an outstanding eco-friendly solution to enhance construction and sustainability green design, incorporating extraordinary modern technology with quality standard.

Our target is to render excellent services, produce best quality products and offer the most competitive price to the market.

**GT Eurogroove** will always be **putting customer's interest on the first place**, as our vision is a never ending march towards progress and be a trusted partner of everyone to enhance quality economy and dependability.

Our view point includes not only just providing you with our products but also associating and modifying solution according to your requirements.

We are with you all the way, **THROUGH THE ENTIRE COURSE OF THE WORK PLAN**, followed by **AFTER SALES** and additional services for accessories and fixtures **BEING MADE AVAILABLE BEYOND DEFECT AND LIABILITY PERIOD.**

We are determined to mark our name throughout **ASIA, AFRICA, MIDDLE-EAST, AMERICAS** and **EURO CONTINENT.**

## OUR STRENGTH

1000m<sup>2</sup> of Glazing panels, aluminium doors and windows/shift.

250 uPVC windows/Shift

Factory Area Over 40,000 Sq.ft.

Lates Italian and German CNC Machinery

Value Engineering

“We are committed to advancing our company in the interests of our clientele.”

# PRODUCTS

FAÇADE	DOORS	WINDOWS	SKYLIGHTS	SPIDER GLAZING
CLADDINGS	SUN BREAKERS	SHOWER CUBICLE	RAILINGS	CANOPIES



Unitized Systems	Stick Curtain Walls	Imported Aluminium Systems
Structural Glazings	Staircase and Balcony Glass and Stainless Steel Railings	Curtain Wall
Aluminium Composite Panel Cladding	Aluminium Doors & Windows	uPVC Doors & Windows
Partitions	Sun Breaker (Various Systems)	Louver Doors
Glass Doors (Frameless)	Canopies	Shower Cubicles
Safety Grills	Skylights	Fire Rated Doors & windows
X-Ray Protected Door & windows	Multi Point (Spider) Fitting Glass Wall	Pergola / Gazebo
Stainless Steel Fabrication	Automated Pedestrian Sliding and Swing Doors	Fibre Cement Board, Plank & Ceiling

# PRODUCTS

FAÇADE	DOORS	WINDOWS	SKYLIGHTS	SPIDER GLAZING
CLADDINGS	SUN BREAKERS	SHOWER CUBICLE	RAILINGS	CANOPIES



## Unitted Curtain Walls

"Unitted" curtain wall systems are those which can be pre assembled and glazed off site and progressively installed on a building thus allowing most of the labour being performed in a controlled environment. Unitted systems are most suitable for large products, i.e high-rise buildings or projects in locations that have higher seismic design requirement. Frame units are typically configured to one module (glass unit) wide by one story in height. These pre-glazed frames are typically placed on bunks consisting of 6 units each and hoisted by a tower crane to their respective floors where they are installed utilising a small hoist from the floor.



## Sun Breaker

Sun breaker are often designed to keep out high sunlight, which causes greater heat gain whilst allowing on low sunlight that gives out little heat gain some glare which can be dealt with by using a secondary internal blind. We can offer appropriate solutions taking into account sun angles that vary depending through specialized suppliers.



## Structural Glass Walls

"Structural glass wall" get their name because they are typically frameless in which support is provided by unique ways of retaining high-span glazing applications without the introduction of conventional aluminium members or structural floor slabs to anchor back to. There are many different types of structural glass wall systems are available with Eurogroove.



## Windows & Doors

We manufacture custom made aluminium sliding windows & doors, awning and casement windows, Tilt and Turn windows, French windows, Hinge and Swing doors, Patio doors.



## Stick Curtain Walls

"Stick" type curtain wall systems are fabricated from aluminium framing members and erected on the building piece-by-piece prior to installing any glass or decorative trims. Single or double story-height vertical framing members are installed first by attaching to floor slabs or other lateral structural elements. After which, intermediate horizontal framing members are installed between the verticals and the process repeats itself as the installation progresses either horizontally around building or vertically up at some points during or after the framing member installation is complete, glass and other infill materials are installed including any decorative trims that may be included as a part of the design.



## Aluminium Composite Panel

We offer conventional Aluminum Composite Panel with silicone joints and newly designed special "E"channel (Exclusive to Eurogroove) type of aluminum composite panel that eliminates the need of silicone joints.



## Staircase and Balcony Railings

We custom build aluminum/stainless steel staircase and balcony railings to provide you with comfort and ensure that your home or business is safe. Since our products are made of aluminum, stainless steel they will last for decades with only minimum maintenance.



## Louvers

We manufacture custom made louvers of any size&shape specifically designed for your building. Our louvers are spaced to provide optimum shading made of rollformed or extruded aluminium with support. Our louvers aluminium or steel box section or channel. Our louvers are known for their strength. We have a wide range of fixed louver fins and panels that can be fixed above or in front of window to create shade.



## Curtain Walling

Our curtain walls are designed to resist air and water infiltration, wind forces acting on the building, seismic forces and its own dead load forces. Curtain walls are designed with extruded aluminium frame infilled with glass which provides an architectural pleasing building, as well as benefits such as day lighting and environmental control. Sun breaker are often designed to keep out high summer sun, which causes greater heat gain whilst allowing on low sun that gives out little heat gain some glare which can be dealt with by using a secondary internal blind, we can offer appropriate solutions taking into account sun angles that vary depending through specialized suppliers. represents a wide range of products that are custom designed to suit any particular building application. All of our products are engineered with expertise focused towards quality, performance and timely completion.



## Partitioning

We offer a wide variety of partitioning which suits your requirements while suggesting the right kind of partitioning to you, we consider a range of factors including lighting level of privacy, sound transmission level of safety security and the images it creates.



# PRODUCTS

FAÇADE	DOORS	WINDOWS	SKYLIGHTS	SPIDER GLAZING
CLADDINGS	SUN BREAKERS	SHOWER CUBICLE	RAILINGS	CANOPIES



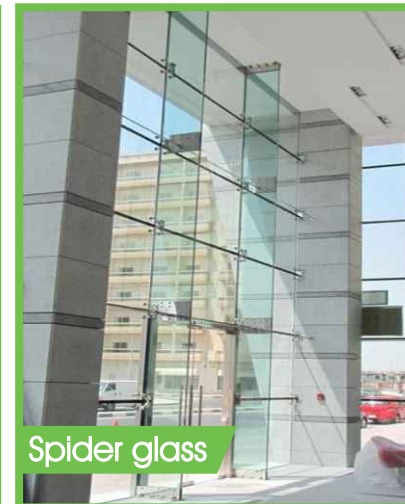
GT Eurogroove represents a wide range of products (refer details under "Products") that are custom designed to suit any particular building application. All of our products are engineered with expertise focused towards quality, performance and timely completion.



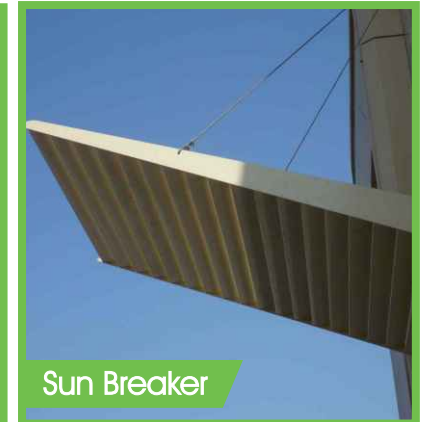
Panel Door



Skylight



Spider glass



Sun Breaker



Shop Front



Glass Canopie



Aluminium Railing



Glass Roof

# PRODUCTS

FAÇADE	DOORS	WINDOWS	SKYLIGHTS	SPIDER GLAZING
CLADDINGS	SUN BREAKERS	SHOWER CUBICLE	RAILINGS	CANOPIES

Georgian Bars in DGU





# HARDWARE & PANEL ESSENTIALS

FAÇADE	DOORS	WINDOWS	SKYLIGHTS	SPIDER GLAZING
CLADDINGS	SUN BREAKERS	SHOWER CUBICLE	RAILINGS	CANOPIES



Hardware is a substantial element of the Windows & Doors, particularly for handling, Safety and Aesthetics. Only high quality Hardware are installed on all Eurogroove products.



SOME OF THE EXECUTED  
PROJECTS  
INDIA

FAÇADE	DOORS	WINDOWS	SKYLIGHTS	SPIDER GLAZING
CLADDINGS	SUN BREAKERS	SHOWER CUBICLE	RAILINGS	CANOPIES



INDIA & MIDDLE EAST

[www.eurogroove.in](http://www.eurogroove.in)



SOME OF THE EXECUTED  
PROJECTS  
INDIA

FAÇADE	DOORS	WINDOWS	SKYLIGHTS	SPIDER GLAZING
CLADDINGS	SUN BREAKERS	SHOWER CUBICLE	RAILINGS	CANOPIES

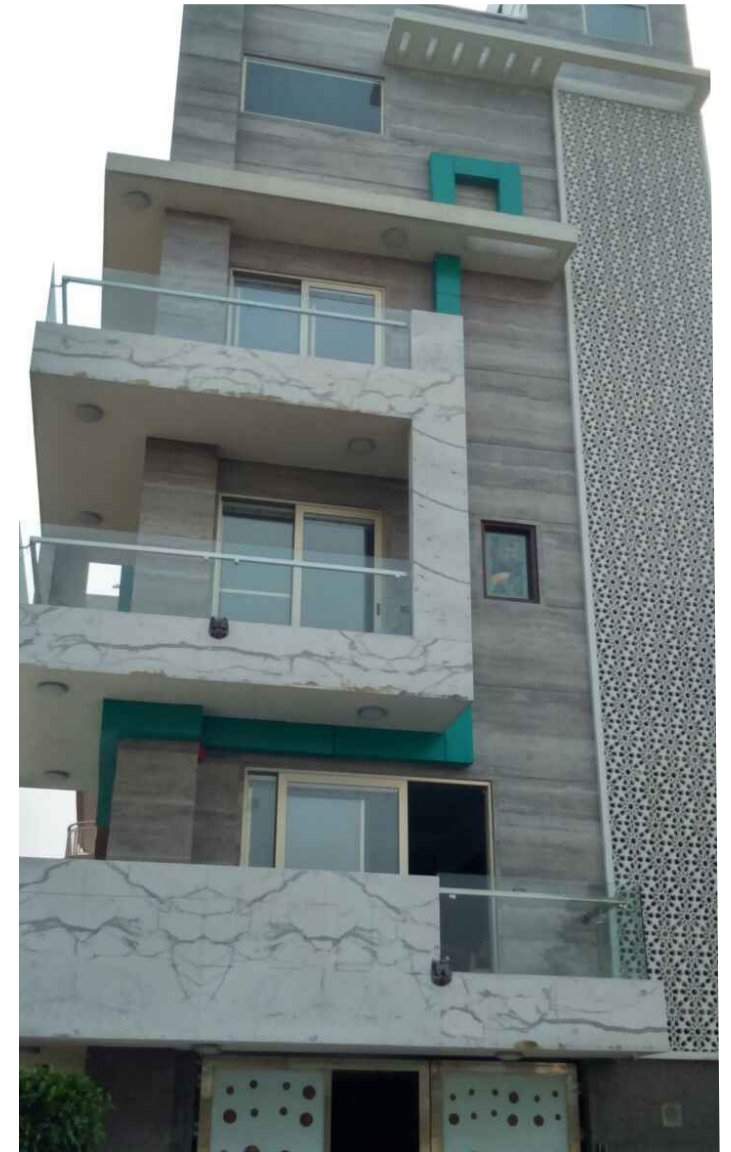
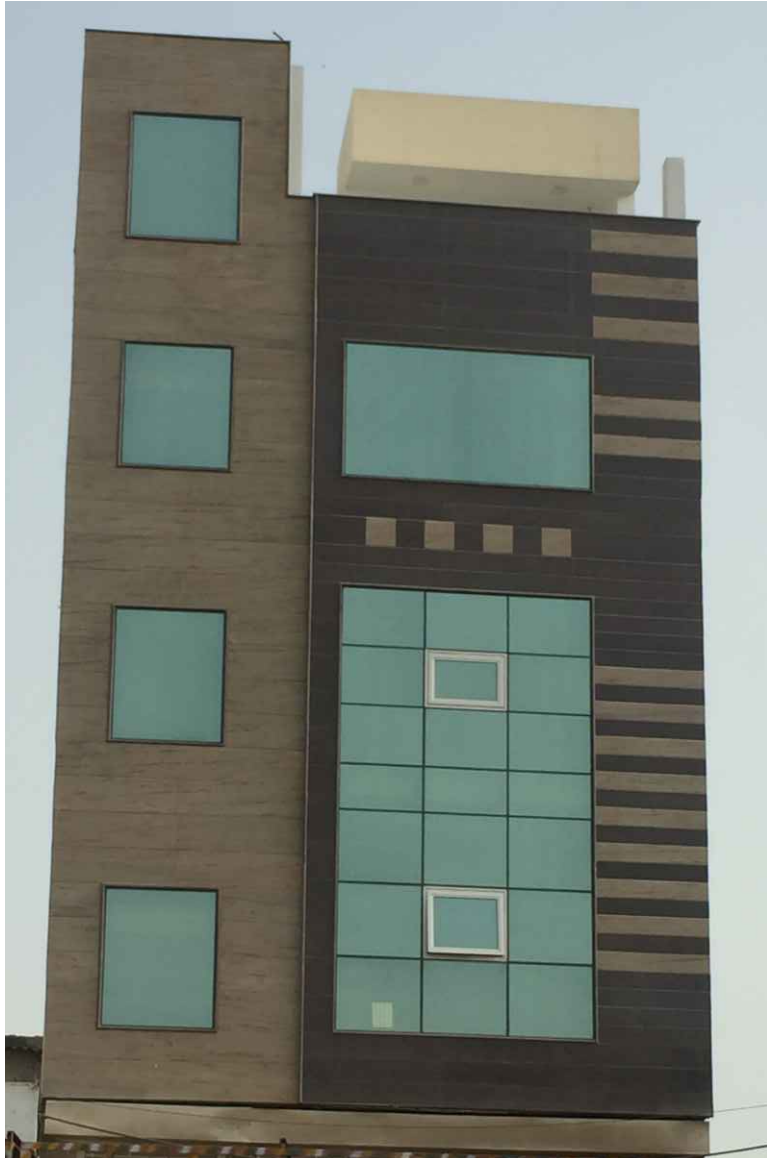


INDIA & MIDDLE EAST

[www.eurogroove.in](http://www.eurogroove.in)

SOME OF THE EXECUTED  
PROJECTS  
INDIA

FAÇADE	DOORS	WINDOWS	SKYLIGHTS	SPIDER GLAZING
CLADDINGS	SUN BREAKERS	SHOWER CUBICLE	RAILINGS	CANOPIES





SOME OF THE EXECUTED  
PROJECTS  
INDIA

FAÇADE	DOORS	WINDOWS	SKYLIGHTS	SPIDER GLAZING
CLADDINGS	SUN BREAKERS	SHOWER CUBICLE	RAILINGS	CANOPIES



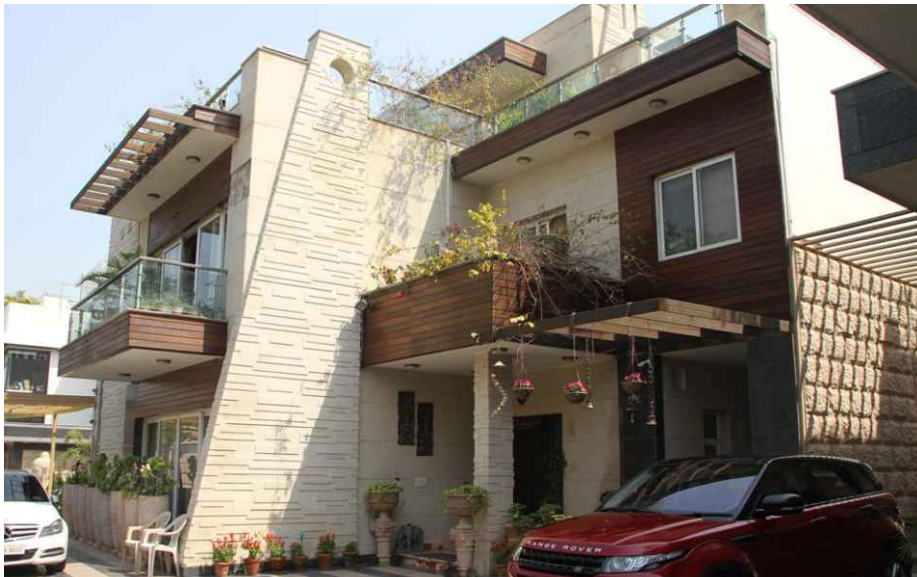
INDIA & MIDDLE EAST

[www.eurogroove.in](http://www.eurogroove.in)



SOME OF THE EXECUTED  
PROJECTS  
INDIA

FAÇADE	DOORS	WINDOWS	SKYLIGHTS	SPIDER GLAZING
CLADDINGS	SUN BREAKERS	SHOWER CUBICLE	RAILINGS	CANOPIES





SOME OF THE EXECUTED  
PROJECTS  
MIDDLE EAST

FAÇADE	DOORS	WINDOWS	SKYLIGHTS	SPIDER GLAZING
CLADDINGS	SUN BREAKERS	SHOWER CUBICLE	RAILINGS	CANOPIES



INDIA & MIDDLE EAST

[www.eurogroove.in](http://www.eurogroove.in)



SOME OF THE EXECUTED  
PROJECTS  
MIDDLE EAST

FAÇADE	DOORS	WINDOWS	SKYLIGHTS	SPIDER GLAZING
CLADDINGS	SUN BREAKERS	SHOWER CUBICLE	RAILINGS	CANOPIES



INDIA & MIDDLE EAST

[www.eurogroove.in](http://www.eurogroove.in)

SOME OF THE EXECUTED  
PROJECTS  
MIDDLE EAST

FAÇADE	DOORS	WINDOWS	SKYLIGHTS	SPIDER GLAZING
CLADDINGS	SUN BREAKERS	SHOWER CUBICLE	RAILINGS	CANOPIES



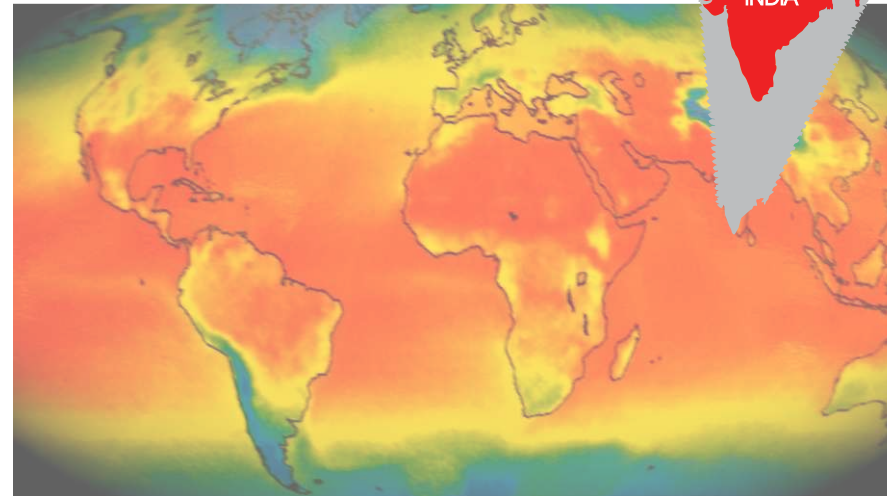


HI QUALITY AND  
UV STABILITY

FAÇADE	DOORS	WINDOWS	SKYLIGHTS	SPIDER GLAZING
CLADDINGS	SUN BREAKERS	SHOWER CUBICLE	RAILINGS	CANOPIES



## FROM AUSTRALIA TO AFRICA, INDIA TO U.S.A



While frames made of aluminium or any other metal tend to scorch. uPVC is such a poor conductor of heat that you can lean on it comfortably and enjoy the views even on the hottest of days.

More significantly, it prevents the heat outside from entering your home, thereby reducing your reliance on cooling devices such as air conditioning.



### ENERGY- SAVING

**EUROGROOVE** windows can be installed regions experiencing up to 180kcal/cm<sup>2</sup> per year radiation, such as the Sahara Desert or Arctic region.

They undergo no physical trace of reduction in rigidity between -30C and 60C. So the conditions of neither the arctic region nor the Sahara Desert could ever cause a dent in any profile.

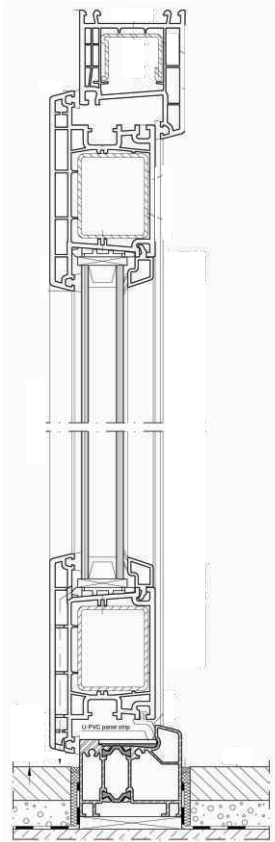
Certain climatic conditions take a toll on buildings, coastal uses for instance, should be able to stand up to high wind loads and the corrosive effects of water. Each Window System is specially formulated to suit the global spectrum of climates and regions.





FAÇADE	DOORS	WINDOWS	SKYLIGHTS	SPIDER GLAZING
CLADDINGS	SUN BREAKERS	SHOWER CUBICLE	RAILINGS	CANOPIES

## INGENIOUS DESIGN KEEPING NOISE LOW






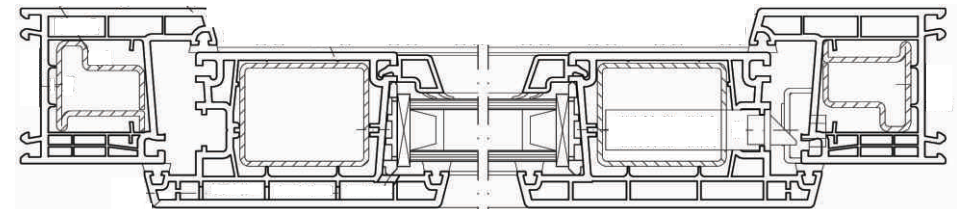
**Casement Door (Outwards Opening) System**

Highly effective dual compression gaskets cause tightness of windows and doors, leading to excellent sound insulation.



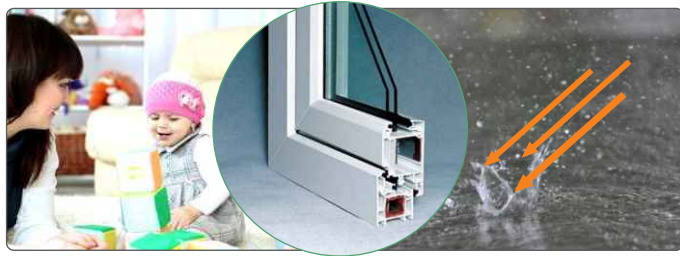
Tailor - made noise protection system so nothing can disturb your peaceful world. Our Casement window system are perfectly designed to reduce sound transmission. The dual compression gaskets assure the tightness of the windows & doors. Combined with suitable glazing and installed in a professional way. Windows can achieve a sound reduction of up to 42 dB\*. This easily exceeds the recommended sound proofing level for sleeping room even in busy town centers.

Sound Insulation Table			
Location and Noise Pollution Level	Recommended Max Noise Level	Recommended Soundproofing Level of Window	Noise Protection Class
Residential Area about 60dB 	Sleeping 25 - 30 dB Housing 30 - 35 dB Working 35 - 50 dB	30 dB 27 dB 14 dB	2 1 0
Town Center about 70 dB 	Sleeping 25 - 30 dB Housing 30 - 35 dB Working 35 - 50 dB	43 dB 37 dB 35 dB	4 3 1
Industrial about 75 dB 	Sleeping 25 - 30 dB Housing 30 - 35 dB Working 35 - 50 dB	47 dB 43 dB 30 dB	5 4 2



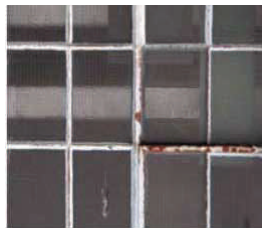
FAÇADE	DOORS	WINDOWS	SKYLIGHTS	SPIDER GLAZING
CLADDINGS	SUN BREAKERS	SHOWER CUBICLE	RAILINGS	CANOPIES

SAFETY MEASURES & MATERIAL QUALITY FIRMLY IN PLACE



NO ROTTING, NO CORROSION

Unlike other materials, Our uPVC profiles are rott-proof & resistant to atmospheric pollution including a range of acids and alkalis. This also means they will never rot in the manner of wooden frames over time.



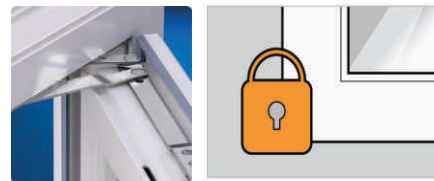
HIGH WIND LOAD PERFORMANCE

They varied at a range wind load capacities of uPVC Window systems that have been Tested in accordance with **BS 5368: Part 3, EN 77**. In other words, these windows are built to withstand the gustiest wind conditions, which makes them an ideal choice in highrises and coastal areas.



SELF EXTINGUISHING

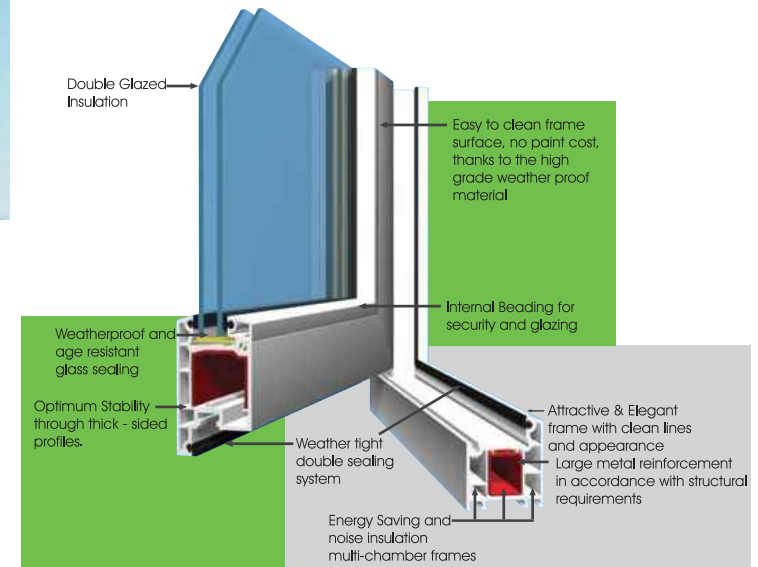
uPVC is classified as a high-impact resistant material. It is notably difficult to ignite and will self extinguish when the source of heat is removed.



Engineered with security for your family and property in mind

Windows supplied by us are internally glazed. This means the glazing beads that hold the glass in place are on the inside and cannot be removed by would-beintruders.

Your home is your heaven, which is why windows serve as an effective barriers against the intrusion.



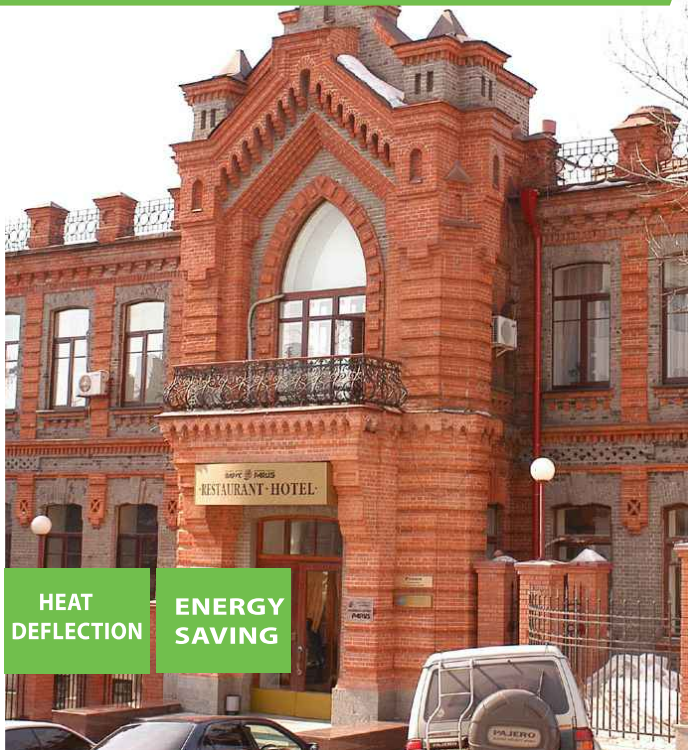
GT Eurogroove windows are resilient enough to shield you from even typhoons, ensuring safety and security indoors.



LONG LASTING UTILITY

FAÇADE	DOORS	WINDOWS	SKYLIGHTS	SPIDER GLAZING
CLADDINGS	SUN BREAKERS	SHOWER CUBICLE	RAILINGS	CANOPIES

LOOKING GOOD AGAINST ALL ODDS



HEAT DEFLECTION ENERGY SAVING

QUALITY MATERIAL ENSURE LONGEVITY OF FORMS & FUNCTIONS

The basis for Our profile is the use of High-impact modified U-PVC material for multi-chambered extrusion in accordance with DIN 7748 (79) Part I\* and RAL-Standard RAL-G2 716/1. The composition is the culmination of over 45 years of research and trials. Tough and impact resistant, it is ideally suited to external use. The high quality compound used to create the renowned smooth gloss finish ensures that the windows stay white and retain pristine appearance indefinitely. Ofcourse our profiles are UV-stabilized and able to withstand severe climatic conditions. **EUROGROOVE** windows are durable and will keep their looks for many years whatever the weather throws at them inside and cannot be removed by would-beintruders.



Our Window system was selected for Bank of China in Jinan, Bavarian Hospital Complex in Germany and Scott Valley Complex in USA for its long-lasting brilliant Characteristics.



FAÇADE	DOORS	WINDOWS	SKYLIGHTS	SPIDER GLAZING
CLADDINGS	SUN BREAKERS	SHOWER CUBICLE	RAILINGS	CANOPIES

## PERFECT PROTECTION AGAINST THE ELEMENTS



Solves the common problems of a high-rise urban home

These days, more people live in high-rise apartments that overlook vehicular traffic with all its noise and air pollution.

This makes housekeeping even more of a chore. **EUROGROOVE** Window system has been thoughtfully designed to keep out what doesn't belong in a clean and restful environment.

## Color & Laminations



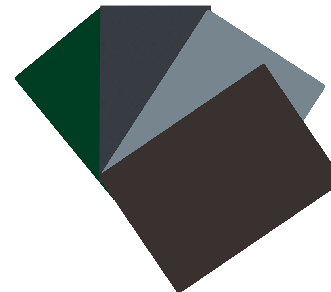
Base Material



Foil Material



Coex Material



## Fuss-Free Maintenance



It takes only half as much time to clean tilt and turn windows, as their opening allows you to swipe both sides at the same time. Being made of exceptionally durable uPVC, **EUROGROOVE** windows are extremely resistant to pollution, diluted acid & alkalis. No special maintenance regime beyond the use of appropriate standard household cleaners is required. All in all, **EUROGROOVE** Window System is virtually guaranteed to help you save plenty of time and money over the long duration of its use.

## Water Tightness.



**EUROGROOVE** windows incorporate an 8mm overlap between frame and sash, as well as dual compression gaskets, to prevent both dust penetration and water infiltration. The windows water tightness is tested in accordance with BS 5368: Part 2, EN 86. There shall be no leakage at a certain wind pressure, amount of sprayed water and time. Typical classification for tilt and turn is group B and C, 300 and 600 Pa. So your home stays absolutely dry however heavily it might be raining from outside.

## Dust Proofing



The sealing in **EUROGROOVE** Windows System is calibrated to achieve excellent air tightness. The air permeability shall be tested in accordance with BS 5368: Part 1, EN 42\*. The value shall be as small as possible to avoid energy loss for e. g. air-conditioning, maximum 1m<sup>3</sup>/m/hr at an air pressure of 10 Pa. Typical value for tilt and turn windows, casements is 0,1m<sup>3</sup>/m/hr. This effectively stops dust drifting in from the outside, which drastically reduces the time you'll need to spend cleaning your home.



## FACTORY OVERVIEW

FAÇADE	DOORS	WINDOWS	SKYLIGHTS	SPIDER GLAZING
CLADDINGS	SUN BREAKERS	SHOWER CUBICLE	RAILINGS	CANOPIES



## CORPORATE OFFICE & WORKS



INDIA & MIDDLE EAST

[www.eurogroove.in](http://www.eurogroove.in)

FACTORY OVERVIEW

FAÇADE	DOORS	WINDOWS	SKYLIGHTS	SPIDER GLAZING
CLADDINGS	SUN BREAKERS	SHOWER CUBICLE	RAILINGS	CANOPIES

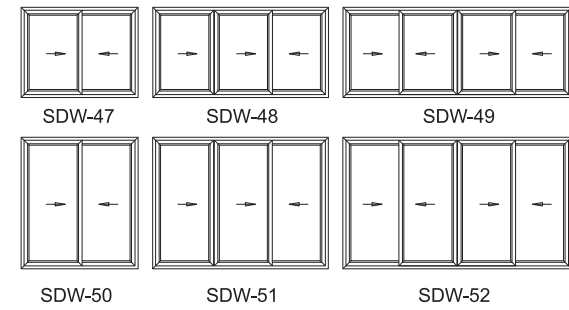
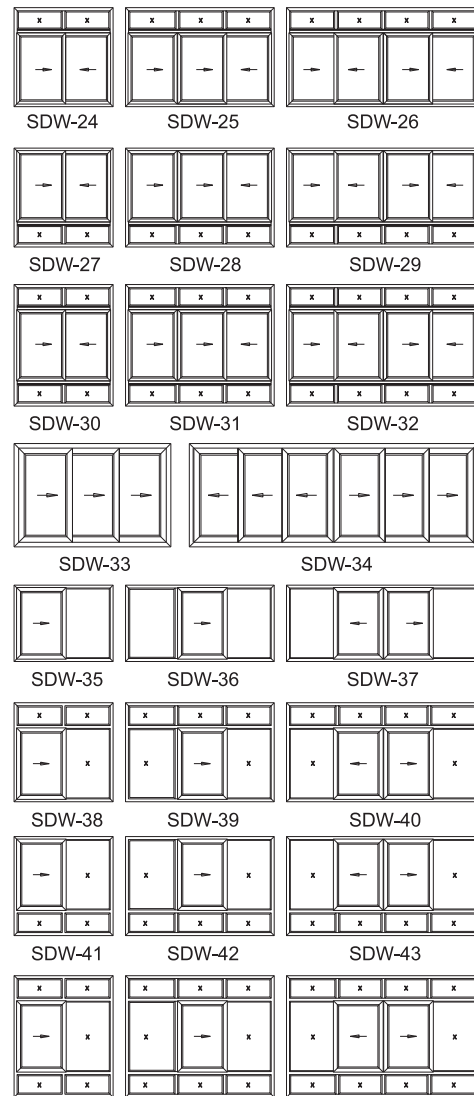
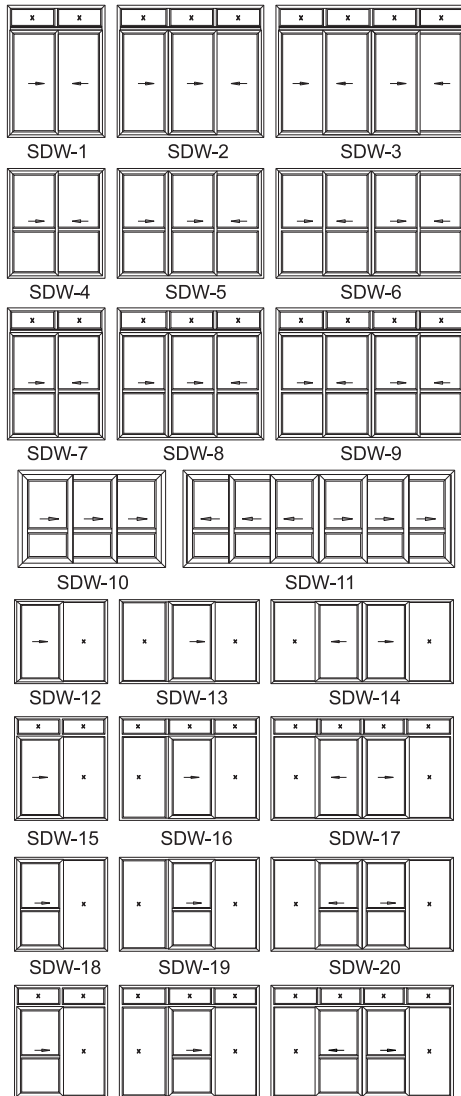




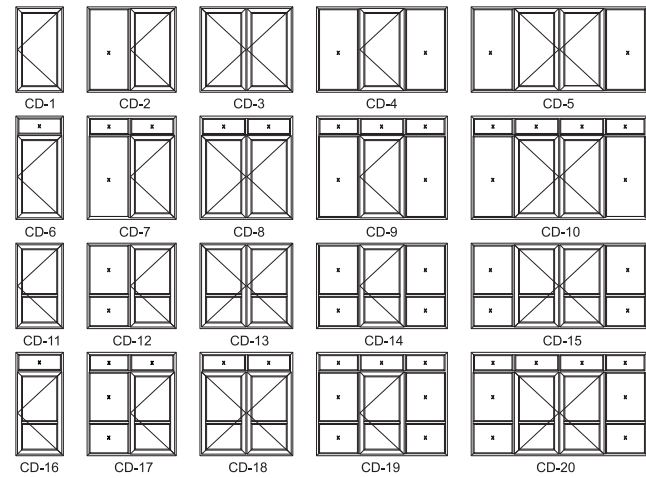
UNLIMITED  
POSSIBILITIES

FAÇADE	DOORS	WINDOWS	SKYLIGHTS	SPIDER GLAZING
CLADDINGS	SUN BREAKERS	SHOWER CUBICLE	RAILINGS	CANOPIES

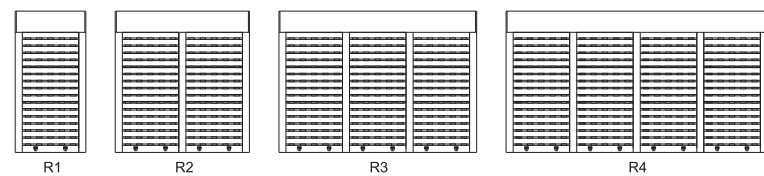
## Sliding Doors/Windows Typology



## Casement Doors Typology



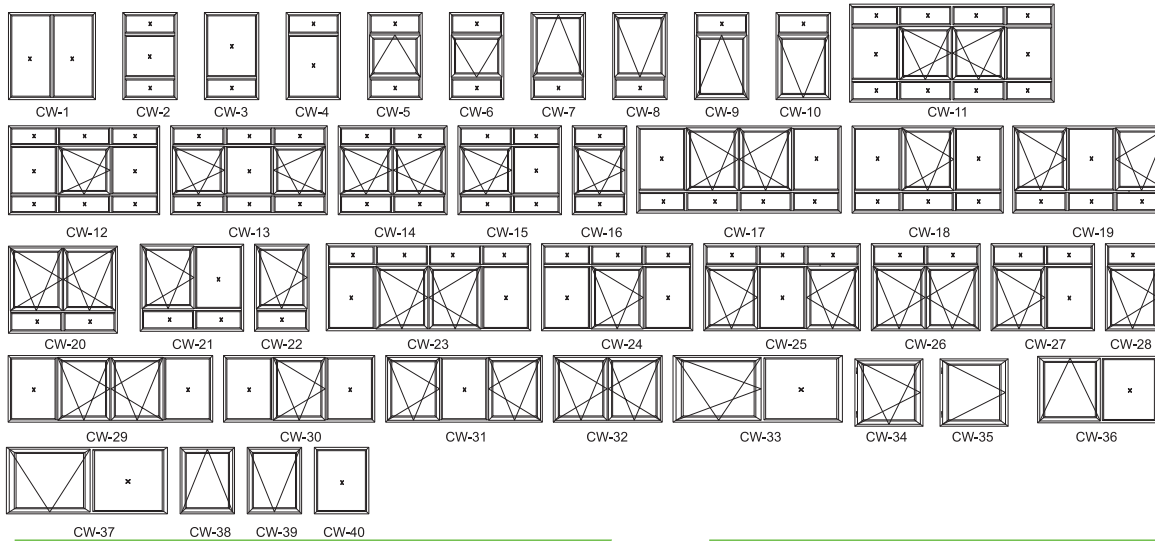
## Roller Shutters Typology



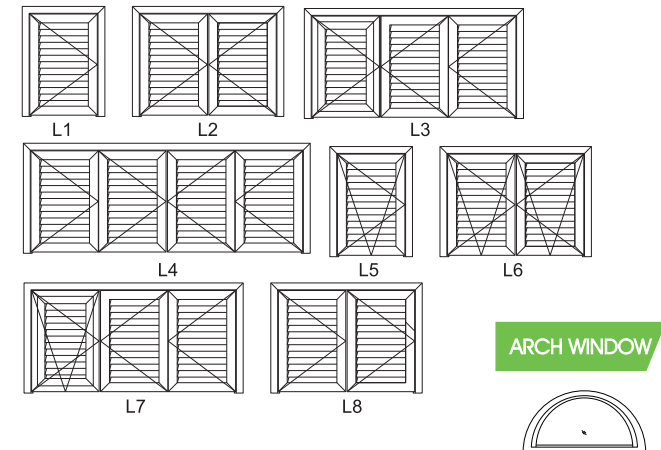
UNLIMITED  
POSSIBILITIES

FAÇADE	DOORS	WINDOWS	SKYLIGHTS	SPIDER GLAZING
CLADDINGS	SUN BREAKERS	SHOWER CUBICLE	RAILINGS	CANOPIES

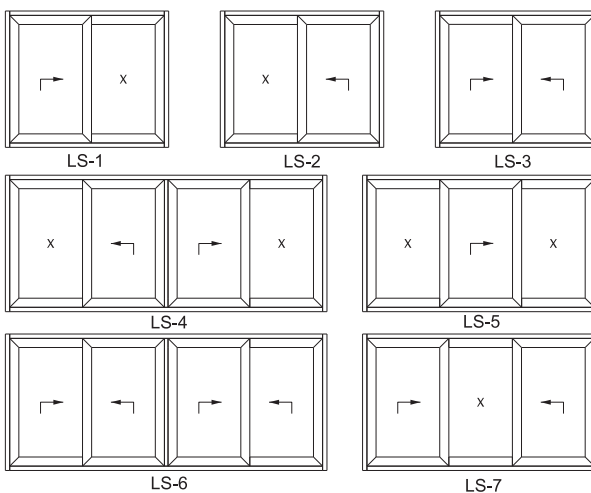
### Casement Windows Typology



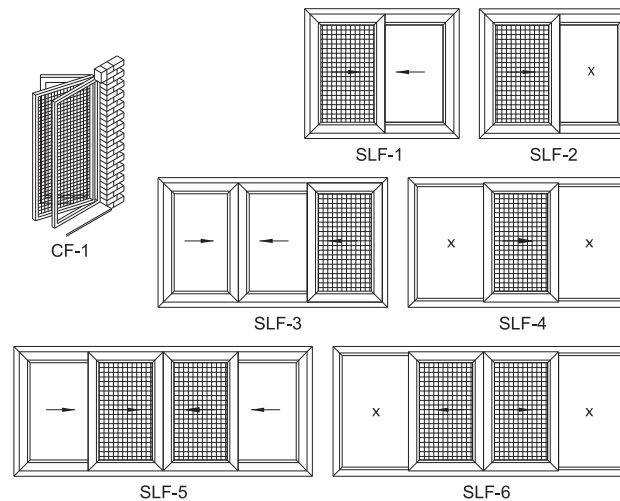
### Louver Shutter Typology



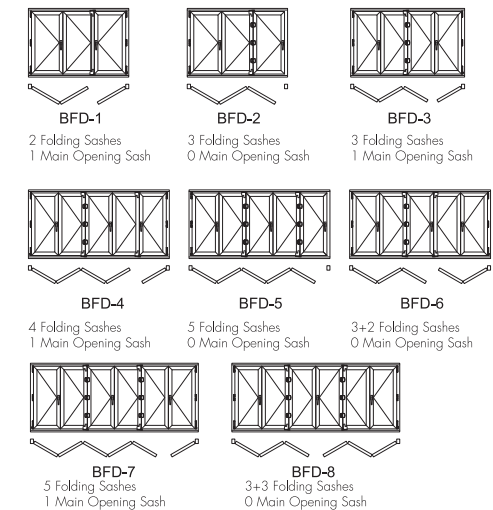
### Lift & Slide Typology



### Sliding Flyscreen Typology



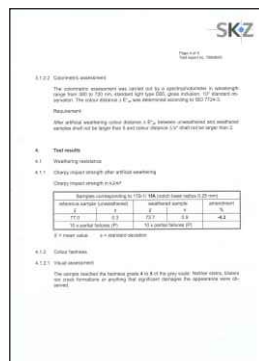
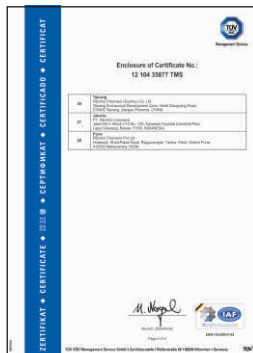
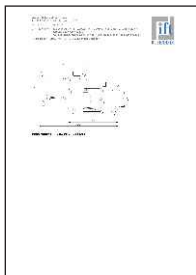
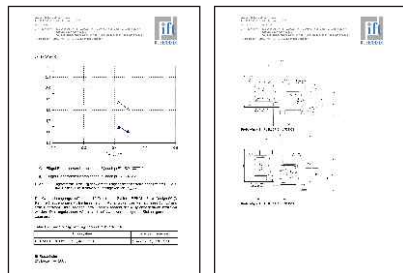
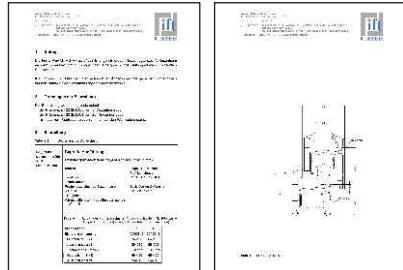
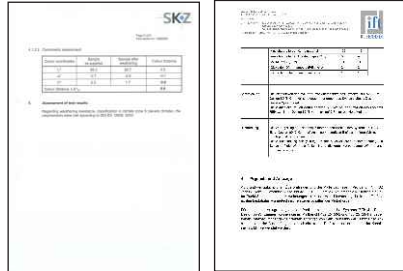
### Bi-Fold Door Typology





# CERTIFICATES

FAÇADE	DOORS	WINDOWS	SKYLIGHTS	SPIDER GLAZING
CLADDINGS	SUN BREAKERS	SHOWER CUBICLE	RAILINGS	CANOPIES



FAÇADE	DOORS	WINDOWS	SKYLIGHTS	SPIDER GLAZING
CLADDINGS	SUN BREAKERS	SHOWER CUBICLE	RAILINGS	CANOPIES

- **GT Eurogroove** is a professional and safety conscious organisation which values the effective management of health, safety and welfare throughout all stages of a project. The clear objective is to minimize harm to persons and property by adopting a proactive approach to effective risk and safety management.
- All work is carried out in accordance with best practice, to the relevant statutory provisions with all reasonably practicable measures being taken to avoid risk to employees or others that may be affected.
- Management and supervisory staff are appointed to take the responsibility for implementing the policy throughout the company and must ensure that health and safety considerations are always given priority in planning and day-to-day supervision of all work.
- We will fully comply with the duties placed upon us within the requirements of Statutory Legislation, whilst at all times complying with as a matter of best practice the requirements and duties set out within Approved Codes of Practice and Guidance as issued by the Health and Safety Executives.
- All employees and sub-contractors are expected to co-operate and assist in the implementation of this policy, whilst ensuring that their own work, so far as is reasonably practicable, is carried out without risk to themselves, others or the environment. This includes co-operating with the management on any health, safety or environment related matter.





FAÇADE	DOORS	WINDOWS	SKYLIGHTS	SPIDER GLAZING
CLADDINGS	SUN BREAKERS	SHOWER CUBICLE	RAILINGS	CANOPIES

## Eurogroove is committed to:

- Provide Customers with high quality products, installations and **GUARANTEED** after sales services.
- Enhance the skills of management and staff through review and actively pursuing an on-going training policy, the objective of which is to prepare the staff to perform their work more effectively.
- Continuous technological improvement.
- Promote the quality management systems and ensuring implementation is achieved by internal auditing, management review, corrective and preventive action.
- Constantly monitor suppliers' quality and guide them in improvements.
- Strive for 'excellence' by providing customized solution, products & services that best satisfies the requirements of our customers and continuously improve quality, reliability & service with the help of an effective Quality Management system, encompassing all statutory, regulatory, health, safety & environment requirement at our work place.



Everyone is responsible for the quality within the company and for maintaining high standards

diversified services. unvarying quality



**Eurogroove**<sup>TM</sup>  
Façade Unlimited

A Complete Façade & uPVC Solution Company

Corporate Office & Works

GT Eurogroove Private Limited

Plot-37, Sector 16, HSIIDC, Bahadurgarh, District Jhajjar, Haryana-124507, India

Tel : +91 1276 30 4000(30 Lines) | Off Mobile : +91 839 600 4000

Fax : +91 1276 30 4001 | Email : [info@eurogroove.in](mailto:info@eurogroove.in) | Web : [www.eurogroove.in](http://www.eurogroove.in)

INDIA & MIDDLE EAST

[www.eurogroove.in](http://www.eurogroove.in)